

SBC60A5
www.embest-tech.com



Power: 12V **Debug** **USB Host** **Ethernet** **Audio Out** **MIC In**

JP OPEN: PE4/5=1				
JP CLOSE: PE4/5=0				
JP1	JP2	PE4	PE5	LCD
CLOSE	CLOSE	0	0	4.3'
OPEN	CLOSE	1	0	5.6'
CLOSE	OPEN	0	1	7.0'
OPEN	OPEN	1	1	10.4'

Buzzer

RS232 **TX1**
RX1

RS485 **485B**
485A

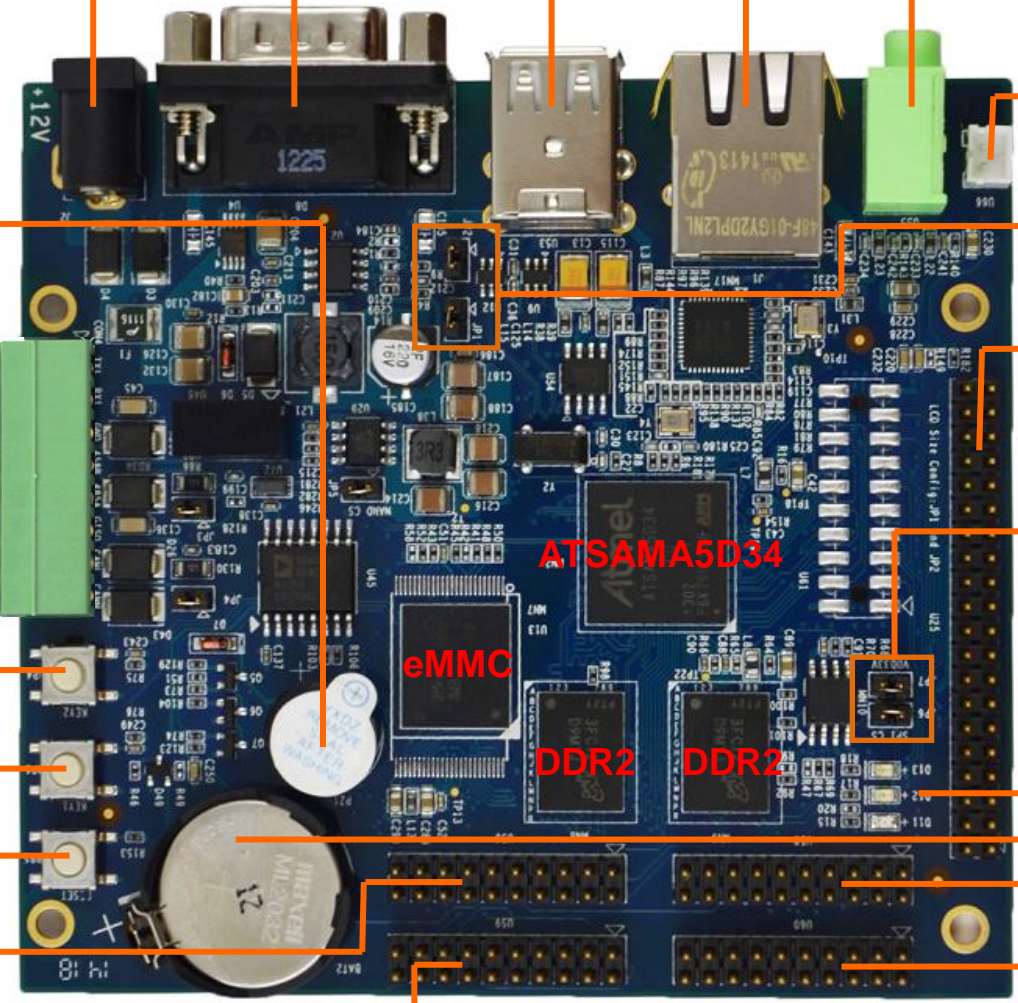
CAN **CANL**
CANH

User Key **Key2**
Key1

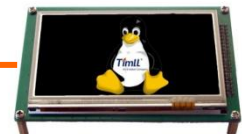
Reset Key



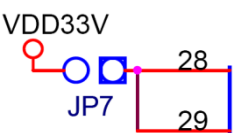
U56: USART (3.3V)



LCD & Touch



JP7: 3.3V For LCD



JP6: SPI Flash CS

LEDS

RTC Battery (Default Without)

U58: EMAC

U60: SPI & ADC & USB_C & TWI

