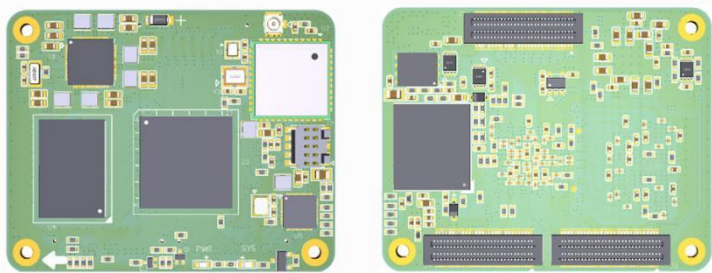


SOM-IMX8MM-LPD4



Features

- ✓ NXP Cortex™A53/ Cortex™M4 i.MX 8M Mini Quad processor
- ✓ 2GB LPDDR4, 16GB eMMC on board, PHY ON Board
- ✓ Rich peripheral I/O support
- ✓ Yocto Linux Kernel 5.4, Uboot 2020
- ✓ Long life time supply with NXP solution

Order Information

Name	LPDDR	EMMC	WIFI/BT	Price@1k
SOM-IMX8MM-LPD4-216CW 0°C-70°	2GB	16GB	Yes	USD69
SOM-IMX8MM-LPD4-216IW -40°C ~ 85°C	2GB	16GB	Yes	USD89

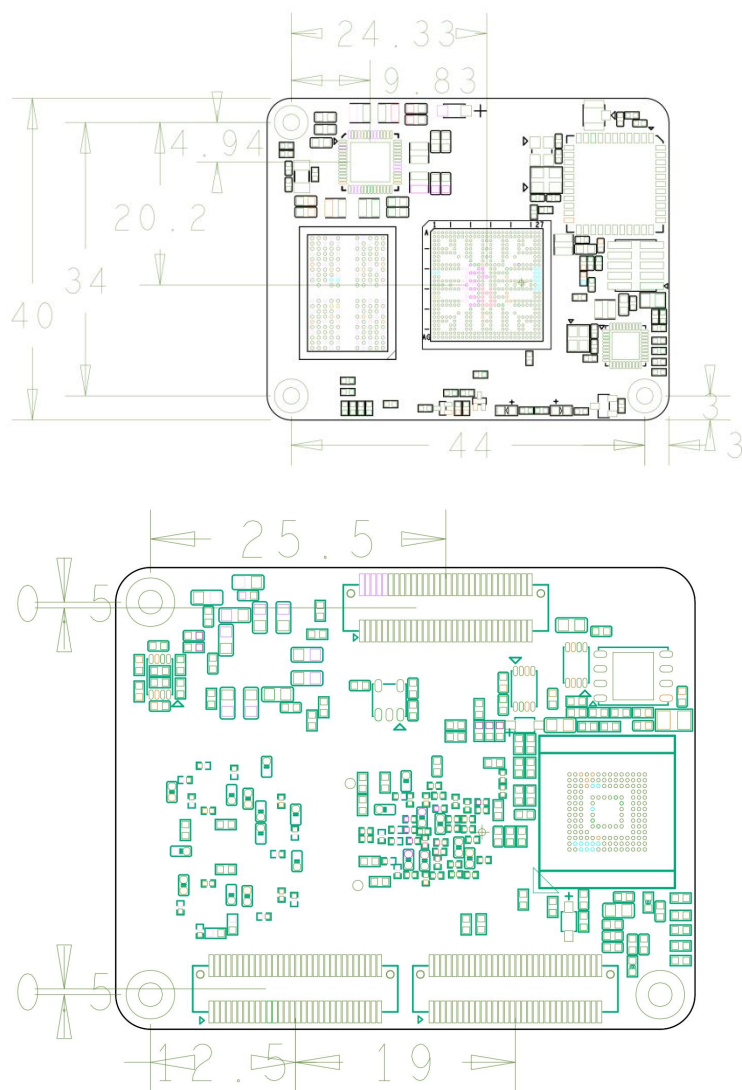
Contact

sales@emtop-tech.com

support@emtop-tech.com

Hardware Specification

Form Factor	3xPH Connectors
Processor	NXP i.MX 8M Mini Quad Cortex™A53 and Cortex™M4 processor
System Memory	2GB LPDDR4 on board (Up to 4GB Max)
Flash Memory	16GB eMMC on board (Up to 64GB Max)
Display	1x MIPI-DSI 4-lane up to 1920 x 1080 at 60Hz
Video Codec	<ul style="list-style-type: none"> • 1080p60 VP9 • 1080p60 HEVC/H.265 decoder • 1080p60 AVC/H.264 Baseline, Main, High decoder • 1080p60 VP8 • 1080p60 AVC/H.264 encoder • 1080p60 VP8 • TrustZone support
Graphics	<ul style="list-style-type: none"> • GCNanoUltra • Vivante GC320
Audio Interface	3x Sai, 1x SPDIF
LAN	1x GbE LAN
USB	2x USB 2.0 with OTG interface
Image Capture Interface	1x MIPI-CSI2 4-lane
Serial Interface	4x UART, 1x SPI Interface
Media Interface	1xSDIO 4-bit
PCI-E	1x PCI-E (x1) Gen2
SATA	N/A
GPIO	12x GPIO
I ² C	3x I ² C
WIFI/BT	Wi-Fi 1x1 (802.11b/g/n/ac 2.4/5GHz)/Bluetooth 5.0
CAN Bus	N/A
Dimensions	50mm x 40mm x 7.3 mm
Environment	Humidity: 0 % to 90 % RH at 60° C(non-condensing)
Operating Temperature	0° C-70° C Default -40° C ~ 85° C



OS	Yocto Linux
Uboot Version&Source Code	2020.04,Stand Alone Source
Kernel Version&Source Code	5.4,Stand Alone Source
Yocto Patch	Uboot 2021.04 Kernel 5.4

Software Specification

Names		Note	Formats
BOOTLOADER	U-BOOT	MMC/SD	Source Code
		FAT	Source Code
		NET	Source Code
KERNEL	LINUX-5.4	Support ROM/CRAM/EXT4/FAT/NFS various o f file system	Source Code
DEVICE DRIVER	SERIAL	Serials driver	Source Code
	RTC	Hardware RTC driver	Source Code
	NET	10/100M/1000M Ethernet driver	Source Code
	CAN	CAN bus driver	Source Code
	SPI	SPI driver	Source Code
	SPI FLASH	SPI Flash driver	Source Code
	I2C	I2C driver	Source Code
	LCD	MIPI-DSI driver	Source Code
	TOUCH SCREEN	I2C Resistive touch panel driver	Source Code
	MMC/SD	MMC/SD controller driver	Source Code
	USB OTG	USB OTG driver	Source Code
	AUDIO	Audio driver (supports audio recording and playback)	Source Code
	AUDIO SPDIF	SPDIF interface, playback	Source Code
	BUTTON	GPIO button driver	Source Code
	LED	LED driver	Source Code
BUZZER	Buzzer driver	Source Code	
WIFI	SDIO WIFI dongle driver	Source Code	
ROOTFS	YOCTO	Weston with Qt & Opencv	Image

Modules

LCD-MIPI7C



7 Inch MIPI Display for imx8m mini

USB 4G Module



4G Module For imx8m mini series Board

MIPI TO HDMI/LVDS Adapter Board



MIPI To HDMI Adapter Board

CAM-MIPI5640



500MP MIPI Camera

PCIe WIFI6



PCIe WIFI

PCIe to USB3.0 module uPD72020x



PCIe To USB3.0